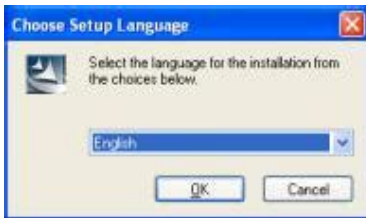


3m x95 manual



File Name: 3m x95 manual.pdf

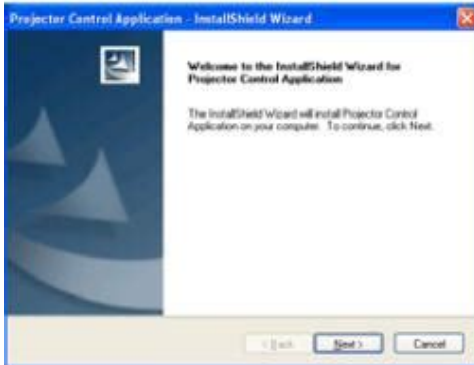
Size: 2186 KB

Type: PDF, ePub, eBook

Category: Book

Uploaded: 1 May 2019, 13:35 PM

Rating: 4.6/5 from 674 votes.

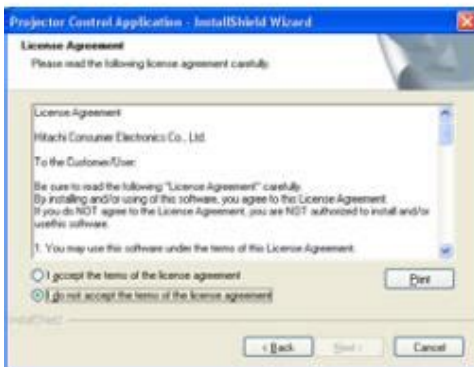


Status: AVAILABLE

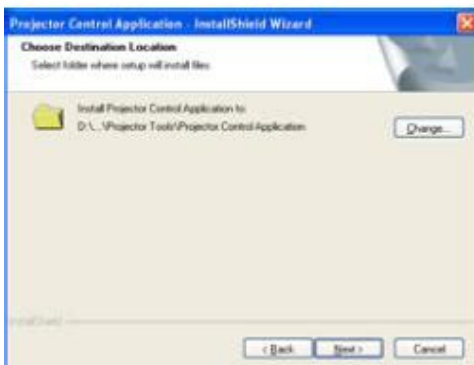
Last checked: 8 Minutes ago!

In order to read or download 3m x95 manual ebook, you need to create a FREE account.

[**Download Now!**](#)



eBook includes PDF, ePub and Kindle version



[Register a free 1 month Trial Account.](#)

[Download as many books as you like \(Personal use\)](#)

[Cancel the membership at any time if not satisfied.](#)

[Join Over 80000 Happy Readers](#)

Book Descriptions:

We have made it easy for you to find a PDF Ebooks without any digging. And by having access to our ebooks online or by storing it on your computer, you have convenient answers with 3m x95 manual . To get started finding 3m x95 manual , you are right to find our website which has a comprehensive

3m x95 manual

collection of manuals listed.

Our library is the biggest of these that have literally hundreds of thousands of different products represented.



please replace the battery according to the following procedures. 1. Turn the projector off, and unplug the power cord. Allow the projector to cool sufficiently. All Rights Reserved. All Rights Reserved. Description There is no input signal.

<http://www.drupalitalia.org/node/68410>

The horizontal or vertical frequency of the input signal The internal temperature is rising. Troubleshooting 26, 68 The projector is cooling down. A certain error has been detected. All Rights Reserved. Description The cooling fan is not operating. There is a possibility that the interior portion has become heated. There is a possibility that the interior portion has become overcooled. The input changeover settings are mismatched. The BLANK function for pictures and the MUTE function for sounds are working. All Rights Reserved. Cases not involving a machine defect Troubleshooting. The lens is dirty or misty. All Rights Reserved. All Rights Reserved. All Rights Reserved. The 3M indoors, using 3M lamps, 3M ceiling mount hardware, and nominal local voltages. The internal 3LCD technology is an innovative 3chip design that sets itself apart by delivering vibrant, true-to-life images with better color brightness and a wider color gamut. View online or download 3m X95 Digital Projector XGA LCD Network Manual, Application Manual, Operators Manual, Product Safety Manual The IWI Tavor X95 also called MicroTavor, MTAR, and MTAR21 is an Israeli bullpup assault rifle designed and produced by Israel Weapon Industries IWI as part of the Tavor rifle family, along with the TAR21 and the Tavor 7. Boasting 5000 lumens, this XGA projector is ideal for larger boardrooms, classrooms, and auditoriums. Lens shift capabilities make for easy placement in virtually any room, and the multiple security features give you peace of mind that your assets are protected. When a meeting or classroom requires multiple presenters, having the ability to display images without switching RGB cables between computers, puts the focus on the presentation instead of on the cables. With the X95, the wireless connectivity obtained with the included SD wireless card or the direct LAN connection, is the most hassle-free way to present.

<http://dhirarchitects.com/images/canon-lv-5110-manual.pdf>

Its even possible to simultaneously project up to four images from wireless computers, allowing even more advanced and interactive presentations. By using an SD memory card or a USB memory device, you can present jpg, png, bmp and mpeg4SP files from the projector without being connected to a computer. This is an ideal feature for those who make mobile presentations or for those who have security concerns about carrying their PC to different locations. Just store your digital camera pictures on an SD card, or store jpg data files on a USB memory device and insert either into the designated slot on the projector connection panel, and you're ready to display. With today's resource constraints and budget concerns, having the ability to manage projectors installed in different classrooms or conference rooms from a single computer is a great task management feature. Using the LAN within your facility or business, the projectors in various rooms are linked to a single computer. The IT manager or AV pro is able to turn the projectors on and off in different rooms and perform various adjustments from the single control room computer. PJ Management software allows the manager charged with asset management to receive error status of all projectors by email. This allows the lamps and filters to be changed promptly, extending the life of the projector and helping reduce unexpected downtime. The IT manager can manage up to 500 projectors at one time. Wireless connectivity is obtained with the included SD wireless card or the By using an SD memory card or a USB memory device, you can present jpg, png, bmp, and mpeg4SP files from the projector without being connected to a computer. The IT manager or AV pro is able to turn the projectors on and off Users can personalize the startup screen with a warning or ownership message Adapt your image to your environment with whiteboard and blackboard modes as well as vivid image daytime mode.

<https://dhomeotravel.com/images/canon-lv-8225-manual.pdf>

Security features include PIN code lock, My screen lock, transition detector, and Kensington lock bar. Vertical keystone correction allows you to correct trapezoidal distortions. Let us know YOUR RECENTLY VIEWED ITEMS Browsing History ON Clear History Not responsible for typographical or illustrative errors. Optional Wireless Presentation With the wireless card you can get rid of network cable clutter and can control the projector from a remote network location. PCLess Presentation Leave your laptop at home, just store your presentations to a SD memory card or USB memory stick. This is ideal for those who give mobile presentations or for those who have security concerns about carrying their PC to different locations. Just store files like your digital camera pictures on an SD card, or store.jpg data files on a USB memory device and insert either into the designated slot on the projector connection panel, and you're ready to display. Prices and product availability can fluctuate and are subject to change without notice. You must have JavaScript enabled in your browser to utilize the functionality of this website. Lamp Timer Notice After installing new bulb, the lamp timer needs to be reset. Please consult your owners manual for information on resetting the lamp timer. Payment will be collected in US dollars. Local customs and duties will be charged by your local government at time of delivery. You may be contacted by customer service with an different freight charges for orders for oversized or heavier items. Please contact us at 800.867.2852 for more details. We will contact you with the charge prior to shipping your order. Each additional delivery will incur additional shipping charges. A Restocking Charge of 20% will apply to all items returned where Topbulb has made no error in merchandizing or shipping. Refunds will be made by original method of payment.

All returns must arrive in its original packaging and all freight charges for the return of goods are to be paid by the customer. Topbulb may at any time limit the number of delivery attempts based on unfavorable delivery history. This information is listed on our website within the Specifications section of each product if there is a manufacturers warranty. After 14 days, the customer is responsible for the shipping cost of warranty replacements. Please note a manufacturers statement of Average Rated Life Hours does not imply a warranty. Please contact us if there is any obvious damage at the time of delivery. Please make all claims for replacement or credit within 14 days of delivery. Please try again. MI Technologies, Inc. ShoppersAdda is the sole distributor of Lutema projector lamps in India. Please be aware that the warranty is not applicable if bought from other seller than ShoppersAdda. Please try your search again later. You can edit your question or post anyway. Platinum Solution bulbs are original 3M replacement lamp and provide same brightness and lifespan. We are an authorized Philips, Osram and many other lamp manufacturers; and sell only genuine products. Part Numbers X95 Amazon calculates a products star ratings based on a machine learned model instead of a raw data average. The model takes into account factors including the age of a rating, whether the ratings are from verified purchasers and factors that establish reviewer trustworthiness. The X95i uses inorganic LCD panels, which feature a higher resistance to light. This translates into longer operational life for the projector, and better picture quality during its life. It also features a new hybrid filter that operates for at least 4000 hours under normal conditions and enabling huge savings in maintenance costs over the lifetime of the projector.

www.cfo-search.com/wp-content/plugins/formcraft/file-upload/server/content/files/1626be6c597a78--compustar-cs-700s-installation-manual.pdf

The X95i is designed for installations in mid to large sized venues such as conference rooms and lecture auditoriums as well as digital signage and public displays. Widerange lens shift capabilities make for easy placement in virtually any environment. Because of its suitability with a range of brands, this item can be found under a number of alternative lamp identification numbers. These include the 00312045701, 4568948, RLC038, 78696999982 and DT00871, although a full list can be seen on this page. This particular part comes with both an original 275 watt bulb and carefully designed module that allows for easy installation within its matching projector. The module features

a black plastic construction, a three prong black plug and a screw at the front and back for secure installation. A complete list of projector models that correspond with this replacement part is displayed on this page and brands include the 3M X95, the Christie LW400, Dukane Imagepro 8948, Hitachi CPX615, Planar PR9020 and Viewsonic PJ1173. Because of its suitability with a range of brands, this item can be found under a number of alternative lamp identification numbers. These include the 00312045701, 4568948, RLC038, 78696999982 and DT00871, although a full list can be seen on this page. This particular part comes with both an original 275 watt bulb and carefully designed module that allows for easy installation within its matching projector. The module features a black plastic construction, a three prong black plug and a screw at the front and back for secure installation. A complete list of projector models that correspond with this replacement part is displayed on this page and brands include the 3M X95, the Christie LW400, Dukane Imagepro 8948, Hitachi CPX615, Planar PR9020 and Viewsonic PJ1173. Other trademarks used herein are the properties of their respective owners.

Important Notice All statements, technical information, and recommendations related to 3M's products are based on information believed to be reliable, but the accuracy or completeness is not guaranteed. Before using this product, you must evaluate it and determine if it is suitable for your intended application. You assume all risks and liability associated with such use. Any statements related to the product which are not contained in 3M's current publications, or any contrary statements contained on your purchase order shall have no force or effect unless expressly agreed upon, in writing, by an authorized officer of 3M. The warranties stated in the applicable 3M Product Manuals are exclusive and are made in place of any and all express or implied warranties or conditions, including any implied warranty of merchantability or fitness for a particular purpose, or any industry practice or custom or trade usage. Failure to follow the instructions contained in the appropriate 3M Product Manual or to use the 3M Product in accordance with 3M's Intended Use Statement will void all warranties and limited remedies. If 3M Product is defective within the applicable warranty period, your exclusive remedy shall be, at 3M's option, to replace or repair the 3M Product or to refund the purchase price of the 3M Product. All replaced parts or products become property of 3M. If the 3M Product is repaired, 3M will repair the defective parts with a new or used parts. If the 3M Product is replaced, 3M will replace the product with the same or equivalent model and with a new or refurbished product. In the case of an approved warranty claim, the replacement 3M Product will carry only the remaining term of the original 3M Product's warranty period as stated in the applicable 3M Product Manual.

For warranty service, you must provide proof of the date of the original purchase, otherwise the manufacturing code date will be used to establish the start date of the warranty. 3M Product Manuals include durability statements and may include limitations specific to the products being used or its intended applications, which take precedence over any statement made here. We delete comments that violate our policy, which we encourage you to read. Discussion threads can be closed at any time at our discretion. This remote provides you a full control of your 3M X95 projector. Install 2 AAA remote control batteries Before getting the remote control to work on your 3M X95 projector, please install two new AA batteries. And don't forget to remove the batteries from the remote if you will not use the remote for a long period and keep them in the safe place. Hold the hook part of the battery cover on the back side of the remote. Remove it to open the cover. Align and insert two new AA batteries. Please follow its plus and minus terminals as indicated in the remote control. Reinstall the battery cover in the direction of the arrow and snap it back into place. How to fix if the remote control does not work on your 3M X95 projector. Sometimes, the replacement remote control may not work on your projector when you use it for the first time. In this case, we have to find out the reason that makes it not function. Test the remote control First, let's test or check if the replacement remote control was broken when it was on the international shipping way. To test the remote control, open your phone camera If your camera is iPhone, please ensure to test

on the front camera which is located on the iPhone screen side and point it at the projector remote control signal InfraRed light on the top of the remote. And then, press any key of the remote to check if you could see the InfraRed light flashed on the phone screen.

If you could not see the InfraRed light, please check the batteries plus and minus terminals. And please contact us if you confirm the batteries were installed correctly. Use the remote control near the projector's remote sensor Secondly, the remote control works with the projector's remote sensor. After testing the remote control InfraRed light work, confirm that you are using the remote. Generally, most of the projector's remote sensor is located in front side of the projector. The sensor senses the signal within 60 degrees range 30 degrees to the left and right of the sensor and 3 meters about. Therefore, you have to ensure to use the projector remote control within the sensing area. Changing the remote control signal frequency In most of the projector remote controls, they have two choices of signal frequency mode. For the 3M projector remote control, it provides two different signal frequency mode the factoryset initial mode 1 Normal and mode 2 High. The switching function is to prevent remote control interference when operating several projectors or other videos devices at the same time. Furthermore, when you change the frequency of the remote control signal, please remember to set the same mode in your projector's REMOTE FREQ. For further information on how to do this, you need to read your projector manual on chapter Remote Control Code. For these purposes we created a catalog system, where all documents, that we have, are sorted by device name. The 3M Projector manuals are sorted by popularity among Guidessimo users by the number of downloads and views on our website.

<http://www.drupalitalia.org/node/68411>